

# THERMAL OVERLOAD RELAYS

## LST THERMAL OVERLOAD RELAYS, SIZE 00



LSTD0032

### SCHRACK INFO

- Equipment:
  - Overload and phase failure protection
  - Auxiliary contacts 1 NO + 1 NC
  - Manual and automatic RESET
  - Switch position indicator
  - TEST function and STOP buttons
  - Sealable
- Auxiliary contact terminal 14/22 and the contactor coil terminal A2 connected through
- For dimensions, wiring diagram and location of the terminals, see from page 848.

DESCRIPTION	NOMINAL CURRENT A / kW*	EAN CODE	AVAILABLE	ORDER NO.
<b>SIZE 00</b>				
Thermal overload relay	0.11...0.16 A / 0.04 kW	9004840541731		<b>LSTD0016</b>
Thermal overload relay	0.14...0.20 A / 0.06 kW	9004840541748		<b>LSTD0020</b>
Thermal overload relay	0.18...0.25 A / 0.06 kW	9004840541755		<b>LSTD0025</b>
Thermal overload relay	0.22...0.32 A / 0.09 kW	9004840541762		<b>LSTD0032</b>
Thermal overload relay	0.28...0.40 A / 0.09 kW	9004840541779		<b>LSTD0040</b>
Thermal overload relay	0.35...0.50 A / 0.12 kW	9004840541786		<b>LSTD0050</b>
Thermal overload relay	0.45...0.63 A / 0.18 kW	9004840541793		<b>LSTD0063</b>
Thermal overload relay	0.55...0.80 A / 0.18 kW	9004840541809		<b>LSTD0080</b>
Thermal overload relay	0.70...1.00 A / 0.25 kW	9004840541816		<b>LSTD0100</b>
Thermal overload relay	0.90...1.25 A / 0.37 kW	9004840541823		<b>LSTD0125</b>
Thermal overload relay	1.10...1.60 A / 0.55 kW	9004840541830		<b>LSTD0160</b>
Thermal overload relay	1.40...2.00 A / 0.75 kW	9004840541847		<b>LSTD0200</b>
Thermal overload relay	1.80...2.50 A / 0.75 kW	9004840541854		<b>LSTD0250</b>
Thermal overload relay	2.20...3.20 A / 1.10 kW	9004840541861		<b>LSTD0320</b>
Thermal overload relay	2.80...4.00 A / 1.50 kW	9004840541878		<b>LSTD0400</b>
Thermal overload relay	3.50...5.00 A / 1.50 kW	9004840541885		<b>LSTD0500</b>
Thermal overload relay	4.50...6.30 A / 2.20 kW	9004840541892		<b>LSTD0630</b>
Thermal overload relay	5.50...8.00 A / 3.00 kW	9004840541908		<b>LSTD0800</b>
Thermal overload relay	7.00...10.0 A / 4.00 kW	9004840541915		<b>LSTD1000</b>
Thermal overload relay	9.00...12.0 A / 5.00 kW	9004840541922		<b>LSTD1200</b>

\*Reference values for 4-pole standard motors at 50 Hz/400 VAC. The selection depends on the specific starting and rated performance of the motor to be protected.



### I KNOW WHERE TO FIND IT!

WITH THE SCHRACK TECHNIK LIVE-PHONE APP

- Access technical product information at any time and from everywhere
- See availability and price immediately
- Order desired products easily



## LST THERMAL OVERLOAD RELAYS, SIZE 0



LST0...

### SCHRACK INFO

- Equipment:
  - Overload and phase failure protection
  - Auxiliary contacts 1 NO + 1 NC
  - Manual and automatic RESET
  - Switch position indicator
  - TEST function and STOP buttons
  - Sealable
- For dimensions, wiring diagram and location of the terminals, see from page 848.

DESCRIPTION	NOMINAL CURRENT A / kW*	EAN CODE	AVAILABLE	ORDER NO.
<b>SIZE 0</b>				
Thermal overload relay	18...25 A / 0.75 kW	9004840541939		<b>LST00250</b>
Thermal overload relay	22...32 A / 1.1 kW	9004840541946		<b>LST00320</b>
Thermal overload relay	28...40 A / 1.5 kW	9004840541953		<b>LST00400</b>
Thermal overload relay	35...50 A / 1.5 kW	9004840541960		<b>LST00500</b>
Thermal overload relay	45...63 A / 2.2 kW	9004840541977		<b>LST00630</b>
Thermal overload relay	55...80 A / 3.0 kW	9004840541984		<b>LST00800</b>
Thermal overload relay	7...10.0 A / 4.0 kW	9004840541991		<b>LST01000</b>
Thermal overload relay	9...12.5 A / 5.5 kW	9004840542004		<b>LST01250</b>
Thermal overload relay	11...16 A / 7.5 kW	9004840542011		<b>LST01600</b>
Thermal overload relay	14...20 A / 7.5 kW	9004840542028		<b>LST02000</b>
Thermal overload relay	17...22 A / 11.0 kW	9004840542035		<b>LST02200</b>
Thermal overload relay	20...25 A / 11.0 kW	9004840542042		<b>LST02500</b>

\*Reference values for 4-pole standard motors at 50 Hz/400 VAC. The selection depends on the specific starting and rated performance of the motor to be protected.

## LST THERMAL OVERLOAD RELAYS, SIZE 2



LST2...

### SCHRACK INFO

- Equipment:
  - Overload and phase failure protection
  - Auxiliary contacts 1 NO + 1 NC
  - Manual and automatic RESET
  - Switch position indicator
  - TEST function and STOP buttons
  - Sealable
- For dimensions, wiring diagram and location of the terminals, see from page 848.

DESCRIPTION	NOMINAL CURRENT A / kW*	EAN CODE	AVAILABLE	ORDER NO.
<b>SIZE 2</b>				
Thermal overload relay	5.5...8 A / 3.0 kW	9004840542059		LST20800
Thermal overload relay	7...10 A / 4.0 kW	9004840542066		LST21000
Thermal overload relay	9...12.5 A / 5.5 kW	9004840542097		<b>LST21250</b>
Thermal overload relay	11...16 A / 7.5 kW	9004840542103		<b>LST21600</b>
Thermal overload relay	14...20 A / 7.5 kW	9004840542110		<b>LST22000</b>
Thermal overload relay	18...25 A / 11.0 kW	9004840542127		<b>LST22500</b>
Thermal overload relay	22...32 A / 15.0 kW	9004840542134		<b>LST23200</b>
Thermal overload relay	28...40 A / 18.5 kW	9004840542141		<b>LST24000</b>
Thermal overload relay	36...45 A / 22.0 kW	9004840542158		<b>LST24500</b>
Thermal overload relay	40...50 A / 22.0 kW	9004840542165		<b>LST25000</b>

\*Reference values for 4-pole standard motors at 50 Hz/400 VAC. The selection depends on the specific starting and rated performance of the motor to be protected.

# THERMAL OVERLOAD RELAYS

## LST THERMAL OVERLOAD RELAYS, SIZE 3



LST2...

### SCHRACK INFO

- Equipment:
  - Overload and phase failure protection
  - Auxiliary contacts 1 NO + 1 NC
  - Manual and automatic RESET
  - Switch position indicator
  - TEST function and STOP buttons
  - Sealable
- For dimensions, wiring diagram and location of the terminals, see from page 848.

DESCRIPTION	NOMINAL CURRENT A / kW*	EAN CODE	AVAILABLE	ORDER NO.
<b>SIZE 3</b>				
Thermal overload relay	18...25 A / 11.0 kW	9004840542172		LST32500
Thermal overload relay	22...32 A / 15.0 kW	9004840542189		LST33200
Thermal overload relay	28...40 A / 18.5 kW	9004840542196		<b>LST34000</b>
Thermal overload relay	36...50 A / 22.0 kW	9004840542202		<b>LST35000</b>
Thermal overload relay	45...63 A / 33.0 kW	9004840542219		<b>LST36300</b>
Thermal overload relay	57...75 A / 37.0 kW	9004840542226		<b>LST37500</b>
Thermal overload relay	70...90 A / 45.0 kW	9004840542233		<b>LST39000</b>
Thermal overload relay	80...100 A / 45.0 kW	9004840542240		<b>LST39999</b>

\*Reference values for 4-pole standard motors at 50 Hz/400 VAC. The selection depends on the specific starting and rated performance of the motor to be protected.

## SEPARATE MOUNTING BRACKET



LSZDTE01

### SCHRACK INFO

- For separate mounting of the thermal overload relays on mounting rail TS35 or DIN rail TH35
- Size 3 also suitable for TS75 or TH75

DESCRIPTION	EAN CODE	AVAILABLE	ORDER NO.
Separate mounting bracket, size 00	9004840542257		<b>LSZDTE01</b>
Separate mounting bracket, size 0	9004840542264		<b>LSZ0TE01</b>
Separate mounting bracket, size 2	9004840542271		<b>LSZ2TE01</b>
Separate mounting bracket, size 3	9004840542288		<b>LSZ3TE01</b>



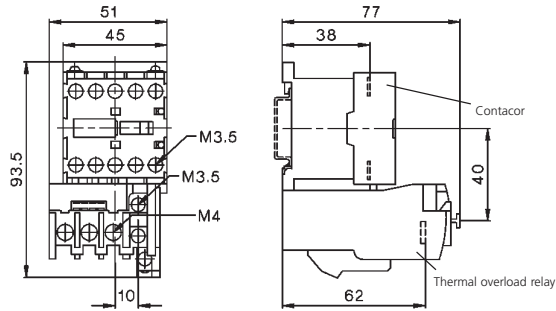
## I KNOW WHERE TO FIND IT!

THE SCHRACK TECHNIK WEB SHOP WITH NAVIGATOR  
[WWW.SCHRACK.AT](http://WWW.SCHRACK.AT)

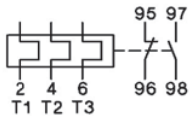
- Finding product information made easy
- Buying products around the clock
- Quick access customer service

## LA1 THERMAL OVERLOAD RELAYS – DIMENSIONS, WIRING- AND CONNECTION DIAGRAMS

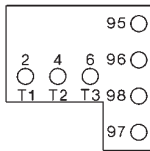
### LA1003.. (+ CONTACTOR LA1009..)



### LA1003.. manual reset



### LA1003..



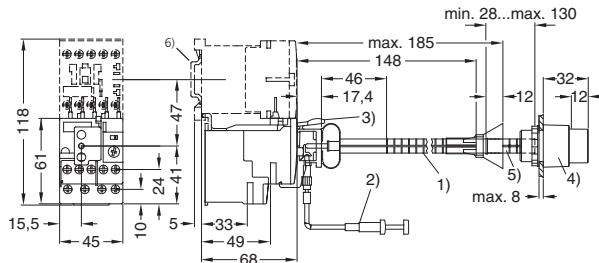
# THERMAL OVERLOAD RELAYS

## LST THERMAL OVERLOAD RELAYS – DIMENSIONS

Lateral distance to earthed parts at least 6 mm.

### LSTD, SIZE 00

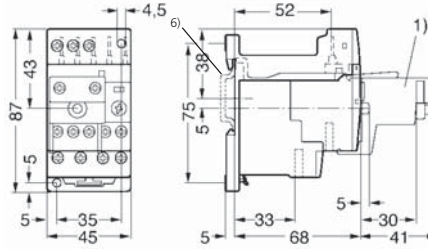
with mechanical RESET (on request)



- <sup>1)</sup> Mechanical RESET (on request)
- <sup>2)</sup> Wire release (on request)
- <sup>3)</sup> Holder for RESET (on request)
- <sup>4)</sup> Pushbutton (on request)
- <sup>5)</sup> Extension plunger (on request)
- <sup>6)</sup> Mounting rail TS/TH35

### LST0, SIZE 0

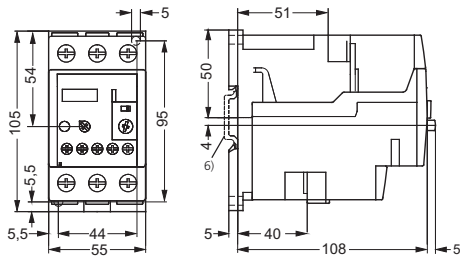
with separate mounting bracket LSZ0TE01



- <sup>1)</sup> Mechanical RESET (on request)
- <sup>6)</sup> Mounting rail TS/TH35

### LST2, SIZE 2

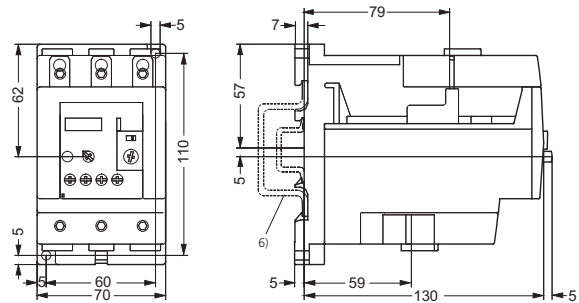
with separate mounting bracket LSZ2TE01



- <sup>6)</sup> Mounting rail TS/TH35

### LST3, SIZE 3

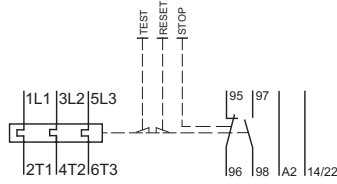
with separate mounting bracket LSZ3TE01



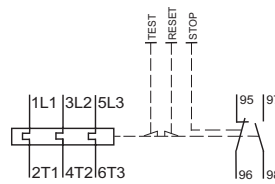
- <sup>6)</sup> Mounting rail TS/TH35 or TS/TH75

## LST THERMAL OVERLOAD RELAYS – WIRING DIAGRAM

### LSTD



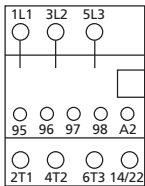
### LST0, LST2, LST3



## LST THERMAL OVERLOAD RELAYS – LOCATION OF TERMINALS

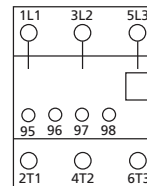
### LSTD

with LSZDTE01



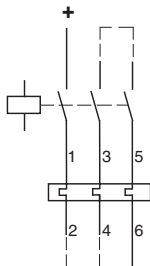
### LST0, LST2, LST3

with LST0TE01, LST2TE01, LST3TE01



## PROTECTION OF DC MOTORS

### 1-POLE SWITCHED (+)



### 2-POLE SWITCHED (+, -)

