

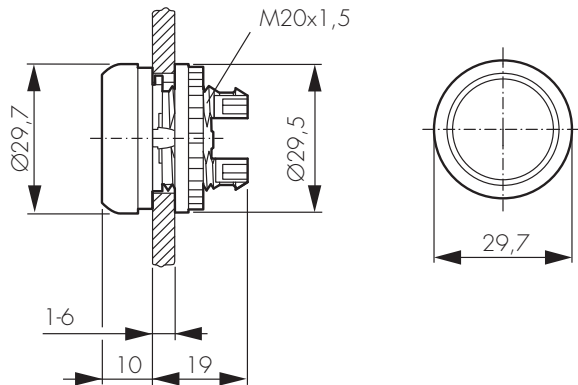
# MAIN SWITCHES, CONTROL SWITCHES, COMMAND AND SIGNALLING DEVICES

## COMMAND AND SIGNALLING DEVICES SERIES MM – GENERAL INFORMATION



SERIES MM

### Actuating and signalling elements

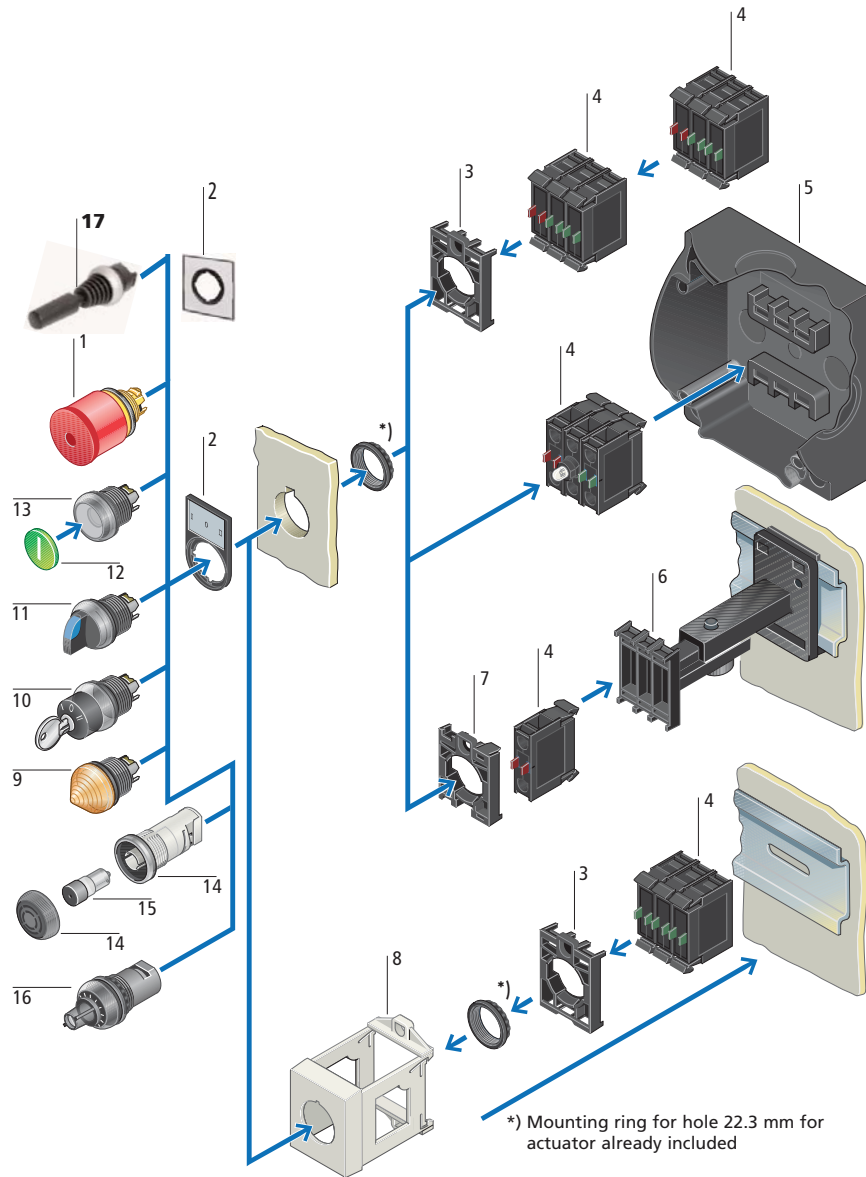


### SCHRACK INFO

- Full LED technology
- 100,000 h service life
- 3 LEDs for 5 colours
- Spring terminals for contact and LED elements
- Degree of protection  
IP 67/69 K for pushbuttons, illuminated pushbuttons and signal lamps; emergency stop buttons, mushroom pushbuttons  
IP 66 for double pushbuttons, selector and key switches
- Abrasion-proof laser labelling
- Database (1000 symbols)
- Custom symbols will be scaled to size
- Individual text possible
- 3 mm font height, 3 lines possible
  1. 8 characters
  2. 10 characters
  3. 8 characters
- 5 mm font height, one line with 5 characters
- Programmable stay-put and spring-return function
- 22.5 mm diameter

# MAIN SWITCHES, CONTROL SWITCHES, COMMAND AND SIGNALLING DEVICES

## SYSTEM OVERVIEW SERIES MM



- 1 Emergency stop buttons
- 2 Label holder
- 3 Mounting adapter
- 4 Contact elements
- 5 Encapsulation
- 6 Telescopic clip
- 7 Centring adapter
- 8 DIN rail adapter

- 9 Indicator light
- 10 Key buttons
- 11 Selector switch
- 12 Button plates / buttons lenses
- 13 Pushbuttons
- 14 Acoustic indicator
- 15 Buzzers
- 16 Potentiometers
- 17 Joystick

# MAIN SWITCHES, CONTROL SWITCHES, COMMAND AND SIGNALLING DEVICES

## SERIES MM – SETS



MM900002

### SCHRACK INFO

- Pre-configured sets consisting of:
  - Command or signalling device
  - Mounting adapter
  - Light sources
  - Auxiliary contacts

DESCRIPTION	EAN CODE	AVAILABLE	ORDER NO.
<b>ILLUMINATED PUSHBUTTON, GREEN, 230 V</b> consisting of: Illuminated pushbutton, flat, spring-return, green, mounting adapter, front, LED 85-264 V AC, green, front, NO contact front	9004840614442		<a href="#">MM900001</a>
<b>ILLUMINATED PUSHBUTTON, RED, 230V</b> consisting of: Illuminated pushbutton, flat, spring-return, red, mounting adapter front, LED 85-264 V AC red, front, NC contact front	9004840614459		<a href="#">MM900002</a>
<b>ILLUMINATED PUSHBUTTON, GREEN, 24V</b> consisting of: Illuminated pushbutton, flat, spring-return, green, mounting adapter front, LED 12-30 V AC/DC, green, front, NO contact front	9004840614466		<a href="#">MM900003</a>
<b>ILLUMINATED PUSHBUTTON, RED, 24V</b> consisting of: Illuminated pushbutton, flat, spring-return, red, mounting adapter front, LED 12-30 V AC/DC red, front, NC contact front	9004840614473		<a href="#">MM900004</a>
<b>INDICATOR LIGHT, FLAT, GREEN, 230 V</b> consisting of: Signal lamp flat, green, mounting adapter front, LED 85-264 V AC, green, front	9004840614480		<a href="#">MM900005</a>
<b>INDICATOR LIGHT, FLAT, RED, 230 V</b> consisting of: Signal lamp, flat, red, mounting adapter front, LED 85-264 V AC red, front	9004840614497		<a href="#">MM900006</a>
<b>INDICATOR LIGHT, FLAT, GREEN, 24V</b> consisting of: Signal lamp flat, green, mounting adapter front, LED 12-30 V AC/DC, green, front	9004840614503		<a href="#">MM900007</a>
<b>INDICATOR LIGHT, FLAT, RED, 24V</b> consisting of: Signal lamp, flat, red, mounting adapter front, LED 12-30 V AC/DC red, front	9004840614510		<a href="#">MM900008</a>
<b>PUSHBUTTON, GREEN</b> , consisting of: Pushbutton, flat, spring-return, green, mounting adapter front, NO contact front	9004840614527		<a href="#">MM900009</a>
<b>PUSHBUTTON, RED</b> , consisting of: Pushbutton, flat, spring-return, red, mounting adapter front, NO contact front	9004840614534		<a href="#">MM900010</a>
<b>EMERGENCY STOP</b> consisting of: Emergency stop button, mounting adapter front, NC contact front	9004840614541		<a href="#">MM900011</a>
<b>SELECTOR SWITCH, 2 POSITIONS STAY-PUT, dia. 60</b> consisting of: T-handle switch, 2 positions r, dia. 60, mounting adapter front, NO contact front, NC contact front	9004840614558		<a href="#">MM900012</a>
<b>SELECTOR SWITCH, 3 POSITIONS STAY-PUT, dia. 60</b> consisting of: T-handle switch, 3 positions r, dia. 60, mounting adapter front, NO contact front, NC contact front	9004840614565		<a href="#">MM900013</a>
<b>DOUBLE PUSHBUTTON, GREEN/RED, 230 V</b> consisting of: Double pushbutton, illuminated, spring-return, green/red, "I-O", mounting adapter front, LED 85-264 V AC ws front, NO contact front, NC contact front	9004840614572		<a href="#">MM900014</a>
<b>DOUBLE PUSHBUTTON, GREEN/RED, 24 V</b> consisting of: Double pushbutton, illuminated, spring-return, green/red, "I-O", mounting adapter front, LED 12-30 V AC/DC ws front, NO contact front, NC contact front	9004840614589		<a href="#">MM900015</a>
<b>KEY OPERATED BUTTON, 2 POSITIONS STAY-PUT, dia. 40</b> consisting of: Key switch, 2 positions r, dia. 40, mounting adapter front, NO contact front, NC contact front	9004840614596		<a href="#">MM900016</a>

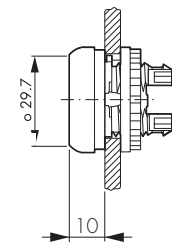


# MAIN SWITCHES, CONTROL SWITCHES, COMMAND AND SIGNALLING DEVICES

## ■ SERIES MM – PUSHBUTTONS, FLAT



MM216605



DIMENSIONS

### ■ SCHRACK INFO

- IP 67, 69K
- 22.5 mm diameter

### ■ TIPS & TRICKS

To obtain a pushbutton with custom label, use the pushbutton without button plate and insert a button plate with your desired text.

DESCRIPTION	WxHxD (mm)	EAN CODE	AVAILABLE	ORDER NO.
<b>SPRING-RETURN</b>				
Flat, spring-return, black	dia. 29.7x10	9004840175332		<b>MM216590</b>
Flat, spring-return, white	dia. 29.7x10	9004840175349		<b>MM216592</b>
Flat, spring-return, red	dia. 29.7x10	9004840175356		<b>MM216594</b>
Flat, spring-return, green	dia. 29.7x10	9004840175363		<b>MM216596</b>
Flat, spring-return, yellow	dia. 29.7x10	9004840175370		<b>MM216598</b>
Flat, spring-return, blue	dia. 29.7x10	9004840175387		<b>MM216600</b>
Flat, spring-return, red "0"	dia. 29.7x10	9004840175400		<b>MM216605</b>
Flat, spring-return, black "0"	dia. 29.7x10	9004840175424		MM216609
Flat, spring-return, green "1"	dia. 29.7x10	9004840175417		<b>MM216607</b>
Flat, spring-return, white "1"	dia. 29.7x10	9004840175431		MM216611
Flat, spring-return, without button plate	dia. 29.7x10	9004840175394		<b>MM216602</b>
<b>STAY-PUT</b>				
Flat, stay-put, black	dia. 29.7x10	9004840175448		<b>MM216613</b>
Flat, stay-put, red	dia. 29.7x10	9004840175462		<b>MM216617</b>
Flat, stay-put, green	dia. 29.7x10	9004840175479		<b>MM216619</b>
Flat, stay-put, white	dia. 29.7x10	9004840175455		MM216615
Flat, stay-put, blue	dia. 29.7x10	9004840175493		<b>MM216623</b>
Flat, stay-put, without button plate	dia. 29.7x10	9004840175509		MM216625
<b>BUTTON PLATES, FLAT WITH INSCRIPTION</b>				
Button plate, flat, black "Arrow"	dia. 22.5	9004840223873		<b>MM218173</b>
Button plate, flat, green "1"	dia. 22.5	9004840215359		MM218165
Button plate, flat, red "Stop"	dia. 22.5	9004840251616		MM218194
Button plate, flat, red "0"	dia. 22.5	9004840215335		MM218153
Button plate, flat, black "Up"	dia. 22.5	9004840224573		MM218185
Button plate, flat, black "Down"	dia. 22.5	9004840224580		MM218186
Button plate, flat, black "0"	dia. 22.5	9004840215342		MM218154
Button plate, flat, black "+"	dia. 22.5	9004840223859		MM218170
Button plate, flat, black "-"	dia. 22.5	9004840223866		<b>MM218171</b>



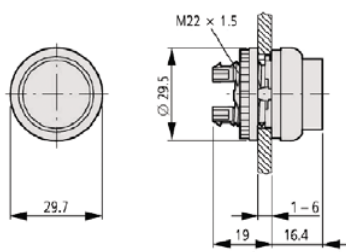
Order no. blue: on stock, usually ready for delivery on the day of order!

# MAIN SWITCHES, CONTROL SWITCHES, COMMAND AND SIGNALLING DEVICES

## ■ SERIES MM – PUSHBUTTONS, HIGH



MM216641



DIMENSIONS

### ■ SCHRACK INFO

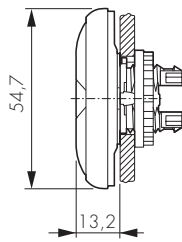
- IP 67, 69K
- 22.5 mm diameter

DESCRIPTION	WxHxD (mm)	EAN CODE	AVAILABLE	ORDER NO.
High, spring-return, black	dia. 29.7x16.4	9004840207200		<b>MM216636</b>
High, spring-return, red	dia. 29.7x16.4	9004840207224		MM216641
High, spring-return, green	dia. 29.7x16.4	9004840207231		<b>MM216643</b>
High, spring-return, blue	dia. 29.7x16.4	9004840207255		MM216649
High, spring-return, red, "0"	dia. 29.7x16.4	9004840177381		MM216655

## ■ SERIES MM – DOUBLE PUSHBUTTONS



MM216700



DIMENSIONS

### ■ SCHRACK INFO

- With signal lamp centre indicator lens, white
- LED can be retrofitted
- IP 66
- 22.5 mm diameter

DESCRIPTION	WxHxD (mm)	EAN CODE	AVAILABLE	ORDER NO.
Spring-return, illuminated, green/red	dia. 29.7x54.7x13.2	9004840175554		<b>MM216698</b>
Spring-return, illuminated, green/red, "1/0"	dia. 29.7x54.7x13.2	9004840175561		<b>MM216700</b>
Spring-return, illuminated, green/red, "Start/Stop"	dia. 29.7x54.7x13.2	9004840175578		<b>MM216702</b>
Spring-return, illuminated, white/black	dia. 29.7x54.7x13.2	9004840175585		<b>MM216704</b>
Spring-return, illuminated, white/black, "1/0"	dia. 29.7x54.7x13.2	9004840175592		<b>MM216706</b>
Spring-return, illuminated, white/black, "Start/Stop"	dia. 29.7x54.7x13.2	9004840175608		<b>MM216708</b>
Spring-return, illuminated, black/black, arrows	dia. 29.7x54.7x13.2	9004840175615		<b>MM216710</b>
Spring-return, illuminated, black/black, "+/-"	dia. 29.7x54.7x13.2	9004840175622		<b>MM218145</b>



## I KNOW WHERE TO FIND IT!

### WITH THE SCHRACK TECHNIK LIVE-PHONE APP

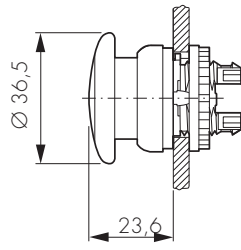
- Access technical product information at any time and from everywhere
- See availability and price immediately
- Order desired products easily

# MAIN SWITCHES, CONTROL SWITCHES, COMMAND AND SIGNALLING DEVICES

## ■ SERIES MM – MUSHROOM BUTTONS



MM216714



DIMENSIONS

### ■ SCHRACK INFO

- IP 67, 69K
- 22.5 mm diameter

DESCRIPTION	WxHxD (mm)	EAN CODE	AVAILABLE	ORDER NO.
<b>SPRING-RETURN</b>				
Spring-return, black	dia. 36.5x23.6	9004840175639		<a href="#">MM216712</a>
Spring-return, red	dia. 36.5x23.6	9004840175646		<a href="#">MM216714</a>
Spring-return, green	dia. 36.5x23.6	9004840175653		<a href="#">MM216716</a>
Spring-return, yellow	dia. 36.5x23.6	9004840175660		<a href="#">MM216718</a>
Spring-return, red, "0"	dia. 36.5x23.6	9004840175677		MM216720
<b>STAY-PUT</b>				
Stay-put, black	dia. 36.5x23.6	9004840207408		<a href="#">MM216743</a>
Stay-put, red	dia. 36.5x23.6	9004840207415		<a href="#">MM216745</a>

## ■ SERIES MM – BUTTON PLATES FOR MUSHROOM BUTTONS



MM216440

### ■ SCHRACK INFO

**MM216440:** To order a mushroom button with a custom label, use the button plate "MM216440-\* - \*" with order code and substitute the colour for the first asterisk and your desired text for the second asterisk.

**Colour:** -R...red, -G...green, -B...blue, W...white, -Y...yellow, -S...black

**Text is possible in:** 3 mm font height: 1st and 3rd line max. 8 characters, 2nd line 10 characters; 5 mm text height: 1 line max. 5 characters

### ■ ORDER SAMPLE

#### **MM216440-G-POWER**

(green button plate with 5 mm font, one line)

#### **MM216440-Y-OIL PRESSURE WARNING**

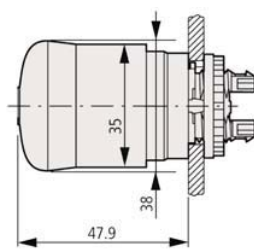
(yellow button plate with 3 mm font, two lines)

DESCRIPTION	WxHxD (mm)	EAN CODE	AVAILABLE	ORDER NO.
Button plate, mushroom buttons, red	dia. 22.5	9004840176827		MM216437
Button plate, mushroom buttons for custom labels	dia. 22.5	9004840176858		MM216440

## ■ SERIES MM – EMERGENCY STOP BUTTONS



MM216878



DIMENSIONS

### ■ SCHRACK INFO

- IP 67, IP 69K
- Overload protection in accordance with EN 418
- Return by pulling
- 22.5 mm diameter

DESCRIPTION	WxHxD (mm)	EAN CODE	AVAILABLE	ORDER NO.
Emergency stop button, non-illuminated	dia. 35x47.9	9004840175790		<a href="#">MM216876</a>
Emergency stop button, illuminated	dia. 35x47.9	9004840175806		<a href="#">MM216878</a>
Emergency stop button, non-illuminated, released by rotating	dia. 35x47.9	9004840622874		<a href="#">MM263467</a>
Emergency stop key switch	dia. 35x47.9	9004840175813		<a href="#">MM216879</a>



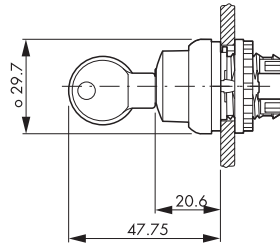
**Order no. blue:** on stock, usually ready for delivery on the day of order!

# MAIN SWITCHES, CONTROL SWITCHES, COMMAND AND SIGNALLING DEVICES

## ■ SERIES MM – KEY OPERATED BUTTONS



MM216900



DIMENSIONS

### ■ SCHRACK INFO

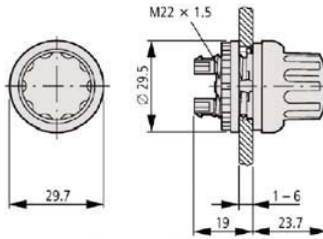
- IP 66
- Locking system, 4 levels
- The following can be modified for MM 216406: spring-return/stay-put, key removable/not removable
- 22.5 mm diameter

DESCRIPTION	WxHxD (mm)	EAN CODE	AVAILABLE	ORDER NO.
2 positions, spring-return, 40°	dia. 29.7x20.6	9004840175820		<a href="#">MM216881</a>
2 positions, stay-put, 60°	dia. 29.7x20.6	9004840175837		<a href="#">MM216887</a>
3 positions, spring-return, 40°	dia. 29.7x20.6	9004840175844		<a href="#">MM216894</a>
3 positions, stay-put, 60°	dia. 29.7x20.6	9004840175851		<a href="#">MM216900</a>
Key MS1 Standard	dia. 29.7x20.6	9004840204117		<a href="#">MM216416</a>

## ■ SERIES MM – ROTARY KNOB



MM216853



DIMENSIONS

### ■ SCHRACK INFO

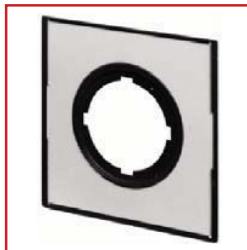
- IP 67
- 22.5 mm diameter

DESCRIPTION	WxHxD (mm)	EAN CODE	AVAILABLE	ORDER NO.
2 positions, spring-return, "I/O"	dia. 29.7x23.7	9004840207835		MM216853
3 positions, spring-return "I/O/0"	dia. 29.7x23.7	9004840207866		MM216861

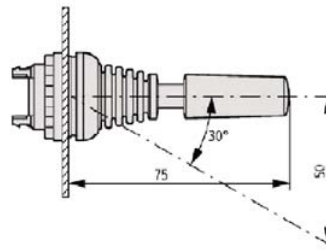
## ■ SERIES MM – JOYSTICK



MM289196



MM279436



DIMENSIONS

DESCRIPTION	WxHxD (mm)	EAN CODE	AVAILABLE	ORDER NO.
2 positions, spring-return	dia. 30x75	9004840665079		MM289196
2 positions, stay-put	dia. 30x75	9004840665093		MM289240
4 positions, spring-return	dia. 30x75	9004840626582		MM279417

### ACCESSORIES

Label holder + label for custom text	50x50	9004840665086		MM279436
--------------------------------------	-------	---------------	--	----------

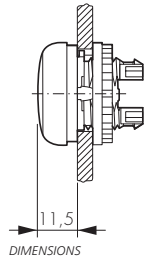


# MAIN SWITCHES, CONTROL SWITCHES, COMMAND AND SIGNALLING DEVICES

## ■ SERIES MM – INDICATOR LIGHT, FLAT



MM216771



DIMENSIONS

### ■ SCHRACK INFO

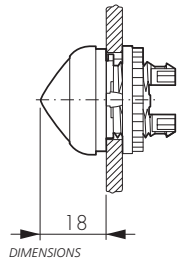
- IP 67, 69K
- 22.5 mm diameter
- LED technology

DESCRIPTION	WxHxD (mm)	EAN CODE	AVAILABLE	ORDER NO.
Flat, white	dia. 29.7x11.5	9004840177398		<b>MM216771</b>
Flat, red	dia. 29.7x11.5	9004840177404		<b>MM216772</b>
Flat, green	dia. 29.7x11.5	9004840177411		<b>MM216773</b>
Flat, yellow	dia. 29.7x11.5	9004840177428		<b>MM216774</b>
Flat, blue	dia. 29.7x11.5	9004840177435		<b>MM216775</b>
Flat, empty	dia. 29.7x11.5	9004840177442		MM216776

## ■ SERIES MM – INDICATOR LIGHT, CONICAL



MM216779



DIMENSIONS

### ■ SCHRACK INFO

- IP 67, 69K
- 22.5 mm diameter
- LED technology

DESCRIPTION	WxHxD (mm)	EAN CODE	AVAILABLE	ORDER NO.
High, white	dia. 29.7x18	9004840175868		MM216778
High, red	dia. 29.7x18	9004840175875		<b>MM216779</b>
High, green	dia. 29.7x18	9004840175882		<b>MM216780</b>
High, yellow	dia. 29.7x18	9004840175899		MM216781

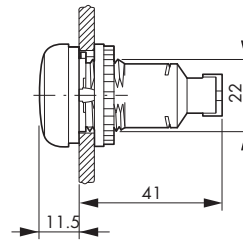
## ■ SERIES MM – ACOUSTIC INDICATOR



MM229015



MM229015 WITH BUZZER



DIMENSIONS

### ■ SCHRACK INFO

- Volume: 83 dB
- IP 40
- 22.5 mm diameter

DESCRIPTION	WxHxD (mm)	EAN CODE	AVAILABLE	ORDER NO.
Acoustic indicator, empty	dia. 29.7x11.5	9004840207903		<b>MM229015</b>
Buzzer, continuous tone, 18-30 V AC/DC	dia. 29.7x11.5	9004840207781		<b>MM229025</b>
Buzzer, pulse tone 24 V DC	dia. 29.7x11.5	9004840207798		<b>MM229028</b>



Order no. blue: on stock, usually ready for delivery on the day of order!



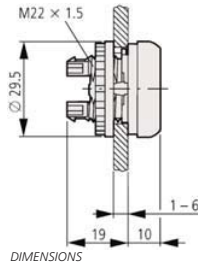


# MAIN SWITCHES, CONTROL SWITCHES, COMMAND AND SIGNALLING DEVICES

## ■ SERIES MM – ILLUMINATED PUSHBUTTONS, FLAT



MM216938



DIMENSIONS

### ■ SCHRACK INFO

- IP 67, 69K
- 22.5 mm diameter
- Custom label is also possible on the button lens

DESCRIPTION	WxHxD (mm)	EAN CODE	AVAILABLE	ORDER NO.
<b>SPRING-RETURN</b>				
Flat, spring-return, white	dia. 29.7x10	9004840175929		<b>MM216922</b>
Flat, spring-return, red	dia. 29.7x10	9004840175936		<b>MM216925</b>
Flat, spring-return, green	dia. 29.7x10	9004840175943		<b>MM216927</b>
Flat, spring-return, yellow	dia. 29.7x10	9004840175950		<b>MM216929</b>
Flat, spring-return, blue	dia. 29.7x10	9004840175967		<b>MM216931</b>
Flat, spring-return, red "0"	dia. 29.7x10	9004840175981		<b>MM216936</b>
Flat, spring-return, green "1"	dia. 29.7x10	9004840175998		<b>MM216938</b>
Flat, spring-return, white "0"	dia. 29.7x10	9004840176001		MM216940
Flat, spring-return, white "1"	dia. 29.7x10	9004840176018		<b>MM216942</b>
Flat, spring-return, without button plate	dia. 29.7x10	9004840175974		<b>MM216933</b>
<b>STAY-PUT</b>				
Flat, stay-put, white	dia. 29.7x10	9004840176025		<b>MM216944</b>
Flat, stay-put, red	dia. 29.7x10	9004840176032		<b>MM216946</b>
Flat, stay-put, green	dia. 29.7x10	9004840176049		<b>MM216948</b>
Flat, stay-put, yellow	dia. 29.7x10	9004840176056		<b>MM216950</b>
Flat, stay-put, blue	dia. 29.7x10	9004840176063		<b>MM216952</b>
Flat, stay-put, red "0"	dia. 29.7x10	9004840176087		MM216957
Flat, stay-put, green "1"	dia. 29.7x10	9004840176094		MM216959
Flat, stay-put, without button plate	dia. 29.7x10	9004840176070		MM216954



### IKNOW WHERE TO FIND IT!

THE SCHRACK TECHNIK WEB SHOP WITH NAVIGATOR  
[WWW.SCHRACK.COM](http://WWW.SCHRACK.COM)

- Finding product information made easy
- Buying products around the clock
- Quick access customer service

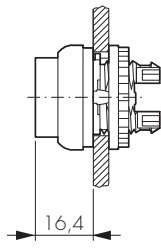


# MAIN SWITCHES, CONTROL SWITCHES, COMMAND AND SIGNALLING DEVICES

## ■ SERIES MM – ILLUMINATED PUSHBUTTON, HIGH



MM216975



DIMENSIONS

### ■ SCHRACK INFO

- IP 67, 69K
- 22.5 mm diameter

DESCRIPTION	WxHxD (mm)	EAN CODE	AVAILABLE	ORDER NO.
<b>SPRING-RETURN</b>				
High, spring-return, white	dia. 29.7x16.4	9004840207521		MM216965
High, spring-return, red	dia. 29.7x16.4	9004840207538		MM216967
High, spring-return, green	dia. 29.7x16.4	9004840207545		MM216969
High, spring-return, yellow	dia. 29.7x16.4	9004840207552		MM216971
High, spring-return, blue	dia. 29.7x16.4	9004840207569		MM216973
High, spring-return, red "0"	dia. 29.7x16.4	9004840177459		MM216975

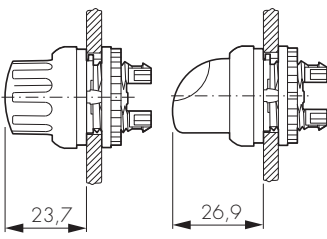
### LENSES FOR ILLUMINATED PUSHBUTTONS

Button lens, illuminated buttons for red	dia. 22.5	9004840176872		MM216442
Button lens, illuminated buttons for green	dia. 22.5	9004840176889		MM216443
Button lens, illuminated buttons for yellow	dia. 22.5	9004840176896		MM216444
Button lens, illuminated buttons for blue	dia. 22.5	9004840176902		MM216445
Button lens, illuminated buttons for individual	dia. 22.5	9004840176919		MM216446

## ■ SERIES MM – SELECTOR SWITCHES



MM216865



DIMENSIONS

### ■ SCHRACK INFO

- IP 66
- 22.5 mm diameter
- Stay-put: 60°
- Spring-return: 40°

### ■ TIPS & TRICKS

The coding parts MM 216407 can be used for conversion from stay-put to spring-return function!

DESCRIPTION	WxHxD (mm)	EAN CODE	AVAILABLE	ORDER NO.
<b>2 POSITIONS</b>				
2 positions, spring-return, 40°, thumb grip	dia. 29.7x26.9	9004840175752		<a href="#">MM216865</a>
2 positions, stay-put, 60°, thumb grip	dia. 29.7x26.9	9004840175769		<a href="#">MM216867</a>
2 positions, V-position, stay-put, thumb grip	dia. 29.7x26.9	9004840207897		<a href="#">MM216874</a>
2 positions, stay-put, black, I-0, thumb grip	dia. 29.7x23.7	9004840196535		<a href="#">MM216855</a>
<b>3 POSITIONS</b>				
3 positions, spring-return, 40°, thumb grip	dia. 29.7x26.9	9004840175776		<a href="#">MM216870</a>
3 positions, stay-put, 60°, thumb grip	dia. 29.7x26.9	9004840175783		<a href="#">MM216872</a>
3 positions, stay-put, black, I-0-II, rotary switch	dia. 29.7x23.7	9004840207873		<a href="#">MM216863</a>



Order no. blue: on stock, usually ready for delivery on the day of order!

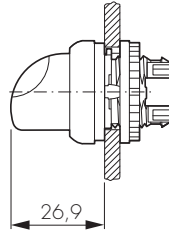


# MAIN SWITCHES, CONTROL SWITCHES, COMMAND AND SIGNALLING DEVICES

## ■ SERIES MM – ILLUMINATED SELECTOR SWITCHES, 2 POSITIONS



MM216845



DIMENSIONS

### ■ SCHRACK INFO

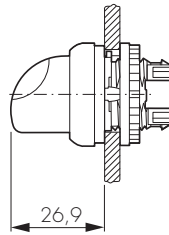
- IP 66
- 22.5 mm diameter

DESCRIPTION	WxHxD (mm)	EAN CODE	AVAILABLE	ORDER NO.
<b>SPRING-RETURN</b>				
2 positions, spring-return, white	dia. 29.7x26.9	9004840176124		<a href="#">MM216812</a>
2 positions, spring-return, red	dia. 29.7x26.9	9004840176131		<a href="#">MM216814</a>
2 positions, spring-return, green	dia. 29.7x26.9	9004840176148		<a href="#">MM216816</a>
2 positions, spring-return, yellow	dia. 29.7x26.9	9004840191486		MM216818
<b>STAY-PUT</b>				
2 positions, stay-put, white	dia. 29.7x26.9	9004840176155		<a href="#">MM216823</a>
2 positions, stay-put, red	dia. 29.7x26.9	9004840176162		<a href="#">MM216825</a>
2 positions, stay-put, green	dia. 29.7x26.9	9004840176179		<a href="#">MM216827</a>
2 positions, stay-put, yellow	dia. 29.7x26.9	9004840191509		<a href="#">MM216829</a>
2 positions, stay-put, blue	dia. 29.7x26.9	9004840191516		<a href="#">MM216831</a>

## ■ SERIES MM – ILLUMINATED SELECTOR SWITCHES, 3 POSITIONS



MM216833



DIMENSIONS

### ■ SCHRACK INFO

- IP 66
- 22.5 mm diameter

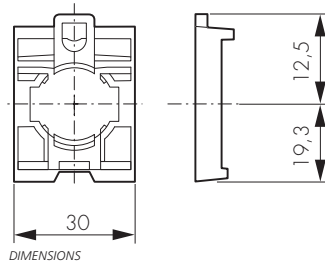
DESCRIPTION	WxHxD (mm)	EAN CODE	AVAILABLE	ORDER NO.
<b>SPRING-RETURN</b>				
3 positions, spring-return, white	dia. 29.7x26.9	9004840176186		<a href="#">MM216833</a>
3 positions, spring-return, red	dia. 29.7x26.9	9004840176193		<a href="#">MM216835</a>
3 positions, spring-return, green	dia. 29.7x26.9	9004840176209		<a href="#">MM216837</a>
<b>STAY-PUT</b>				
3 positions, stay-put, white	dia. 29.7x26.9	9004840176216		<a href="#">MM216843</a>
3 positions, stay-put, red	dia. 29.7x26.9	9004840176223		<a href="#">MM216845</a>
3 positions, stay-put, green	dia. 29.7x26.9	9004840176230		<a href="#">MM216847</a>
3 positions, stay-put, yellow	dia. 29.7x26.9	9004840191547		<a href="#">MM216849</a>
3 positions, stay-put, blue	dia. 29.7x26.9	9004840191554		MM216851

# MAIN SWITCHES, CONTROL SWITCHES, COMMAND AND SIGNALLING DEVICES

## ■ SERIES MM – ADAPTERS



MM216374



DIMENSIONS

### ■ SCHRACK INFO

- For front mounting of switch and LED elements

## ■ TIPS & TRICKS

The mounting adapter is required for any command and signal device that consists of individual components. Up to 6 contacts or one LED plus up to 4 contacts can be mounted.

DESCRIPTION	WxH (mm)	EAN CODE	AVAILABLE	ORDER NO.
Mounting adapter (front)	30x31.8	9004840176247		<a href="#">MM216374</a>
Mounting adapter (front), 4 mounting locations	44x45	9004840467741		<a href="#">MM279437</a>

## ■ SERIES MM – SWITCHING ELEMENTS



MM216378

### ■ SCHRACK INFO

- Spring-tension (CC=spring terminals) or screw terminals
- Breaking capacity: AC15, 230 V 6 A  
DC13, 24 V 3 A

DESCRIPTION	EAN CODE	AVAILABLE	ORDER NO.
<b>SWITCHING ELEMENT FOR FRONT MOUNTING</b>			
NO contact front	9004840176254		<a href="#">MM216376</a>
NC contact front	9004840176261		<a href="#">MM216378</a>
NO contact CC front	9004840176292		<a href="#">MM216384</a>
NC contact CC front	9004840176308		<a href="#">MM216385</a>
<b>SWITCHING ELEMENT FOR FLOOR MOUNTING</b>			
NO contact, floor	9004840176278		<a href="#">MM216380</a>
NC contact, floor	9004840176285		<a href="#">MM216382</a>
NO contact CC, floor	9004840176315		<a href="#">MM216386</a>
NC contact CC, floor	9004840176322		<a href="#">MM216387</a>
<b>SWITCHING ELEMENT WITH DOUBLE CONTACTS</b>			
NC double contact CC front	9004840547054		<a href="#">MM107899</a>
NO double contact CC front	9004840625783		<a href="#">MM107940</a>



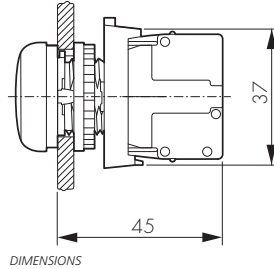
Order no. blue: on stock, usually ready for delivery on the day of order!

# MAIN SWITCHES, CONTROL SWITCHES, COMMAND AND SIGNALLING DEVICES

## ■ SERIES MM – LIGHT EMITTING DIODES



MM216557



DIMENSIONS

### ■ SCHRACK INFO

2 supply voltages:	12-30 V AC/DC 85-264 V AC
Rated current:	12-30 V AC/DC: 8-15 mA 85-264 V AC: 5-15 mA (Pmax = 0.33 W)
Diameter:	22.5 mm

### ■ TIPS & TRICKS

Use for enclosures and telescopic clip floor. Spring terminals (CC).

DESCRIPTION	EAN CODE	AVAILABLE	ORDER NO.
<b>LED FOR FRONT MOUNTING</b>			
LED 12-30 V AC/DC white front	9004840176339		<a href="#">MM216557</a>
LED 12-30 V AC/DC red front	9004840176346		<a href="#">MM216558</a>
LED 12-30 V AC/DC green front	9004840176353		<a href="#">MM216559</a>
LED 12-30 V AC/DC, blue front	9004840184549		<a href="#">MM218057</a>
LED 12-30 V AC/DC white CC front	9004840176452		<a href="#">MM216569</a>
LED 12-30 V AC/DC red CC front	9004840176469		<a href="#">MM216570</a>
LED 12-30 V AC/DC green CC front	9004840176476		<a href="#">MM216571</a>
LED 12-30 V AC/DC, blue CC front	9004840184525		<a href="#">MM218061</a>
LED 85-264 V AC white front	9004840176391		<a href="#">MM216563</a>
LED 85-264 V AC red front	9004840176407		<a href="#">MM216564</a>
LED 85-264 V AC green front	9004840176414		<a href="#">MM216565</a>
LED 85-264 V AC, blue front	9004840184556		<a href="#">MM218059</a>
LED 85-264 V AC white CC front	9004840176513		<a href="#">MM216575</a>
LED 85-264 V AC red CC front	9004840176520		<a href="#">MM216576</a>
LED 85-264 V AC green CC front	9004840176537		<a href="#">MM216577</a>
LED 85-264 V AC, blue CC front	9004840184501		<a href="#">MM218063</a>
<b>LED FOR FLOOR MOUNTING</b>			
LED 12-30 V AC/DC white, floor	9004840176360		<a href="#">MM216560</a>
LED 12-30 V AC/DC red, floor	9004840176377		<a href="#">MM216561</a>
LED 12-30 V AC/DC green, floor	9004840176384		<a href="#">MM216562</a>
LED 12-30 V AC/DC, blue, floor	9004840184563		<a href="#">MM218058</a>
LED 12-30 V AC/DC white, floor CC	9004840176483		<a href="#">MM216572</a>
LED 12-30 V AC/DC green, floor CC	9004840176506		<a href="#">MM216574</a>
LED 12-30 V AC/DC red, floor CC	9004840176490		MM216573
LED 85-264 V AC white, floor	9004840176421		<a href="#">MM216566</a>
LED 85-264 V AC red, floor	9004840176438		<a href="#">MM216567</a>
LED 85-264 V AC green, floor	9004840176445		<a href="#">MM216568</a>
LED 85-264 V AC blue, floor	9004840184570		MM218060
LED 85-264 V AC red, floor CC	9004840176551		<a href="#">MM216579</a>
LED 85-264 V AC white, floor CC	9004840176544		MM216578
<b>LED ACCESSORIES</b>			
LED test module 12-30 V AC/DC	9004840246865		<a href="#">MM231079</a>
LED test module 85-264 V AC/DC	9004840242317		<a href="#">MM231080</a>



# MAIN SWITCHES, CONTROL SWITCHES, COMMAND AND SIGNALLING DEVICES

## ■ SERIES MM – COMPLETE UNITS



MM216529



MM216525

### ■ SCHRACK INFO

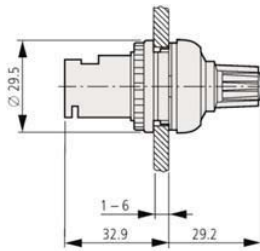
- 22.5 mm diameter
- Surface mounting: Insulated enclosure IP 67
- Surface and panel mounting units delivered pre-assembled.

DESCRIPTION	EAN CODE	AVAILABLE	ORDER NO.
All-in-one surface buttons, 2x "0", "1"	9004840177251		<a href="#">MM216529</a>
All-in-one surface buttons, 3x "1", "0", "2"	9004840177268		MM216532
All-in-one surface buttons, key switch, 1NO 1NC, Spring-return/stay-put function	9004840177244		MM216526
All-in-one surface buttons, emergency stop mushroom button 1NO 1NC	9004840177237		<a href="#">MM216525</a>
All-in-one surface buttons, emergency stop mushroom button 2NC	9004840177220		<a href="#">MM216524</a>
All-in-one surface buttons, emergency stop mushroom button 1NO 1NC	9004840177213		MM216523
All-in-one surface buttons, green "1"	9004840177206		<a href="#">MM216522</a>
All-in-one surface buttons, red "0"	9004840177190		MM216521
All-in-one emergency stop button 1 NC for panel mounting	9004840195781		<a href="#">MM216515</a>
All-in-one emergency stop button 1NO 1NC	9004840215311		<a href="#">MM216516</a>
All-in-one emergency stop button 1NO 1NC, spring-return/stay-put function	9004840372144		<a href="#">MM216514</a>

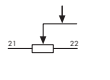
## ■ SERIES MM – POTENTIOMETERS



MM229491



DIMENSIONS



CIRCUIT DIAGRAM

### ■ SCHRACK INFO

- Complete with potentiometer
- From 1 k $\Omega$  to 470 k $\Omega$
- 3 terminals lead out separately
- Degree of protection IP 65
- Fully insulated
- Pmax = 0.5 W

DESCRIPTION	WxHxD (mm)	EAN CODE	AVAILABLE	ORDER NO.
Potentiometer 1 k $\Omega$	dia. 29.5x29.2	9004840207699		<a href="#">MM229489</a>
Potentiometer 4.7 k $\Omega$	dia. 29.5x29.2	9004840207705		<a href="#">MM229490</a>
Potentiometer 10 k $\Omega$	dia. 29.5x29.2	9004840207712		<a href="#">MM229491</a>
Potentiometer 100 k $\Omega$	dia. 29.5x29.2	9004840207736		MM229493
Potentiometer 470 k $\Omega$	dia. 29.5x29.2	9004840207743		<a href="#">MM229494</a>



## I KNOW WHERE TO FIND IT!

### WITH THE SCHRACK TECHNIK LIVE-PHONE APP

- Access technical product information at any time and from everywhere
- See availability and price immediately
- Order desired products easily



Order no. blue: on stock, usually ready for delivery on the day of order!



# MAIN SWITCHES, CONTROL SWITCHES, COMMAND AND SIGNALLING DEVICES

## SERIES MM – SURFACE ENCLOSURE



MM216536



MM216538

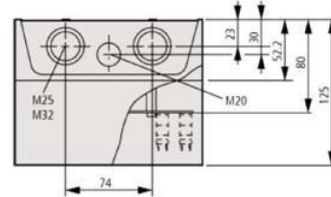
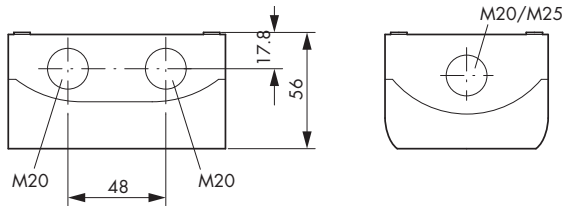
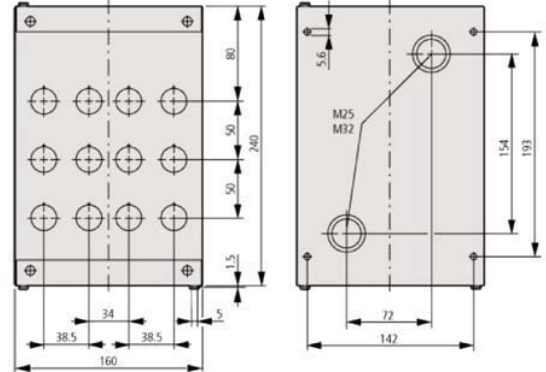
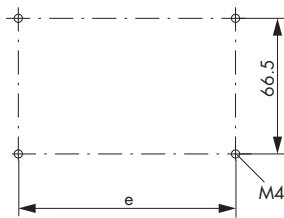
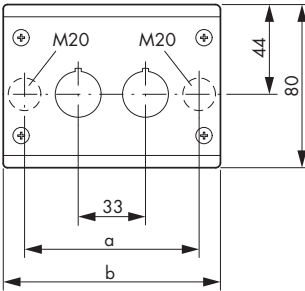


MM222688

### SCHRACK INFO

- 22.5 mm diameter

### DIMENSIONS



Installation positions	a	b	e	Line entries
1	172	42.6	58.5	2 x M16 3 x M20 2 x M25
2	120	85.6	106.5	2 x M20 3 x M20 2 x M25
3	153	118.6	139.5	2 x M20 2 x M25 4 x M20
4	186	151.6	172.5	2 x M20 2 x M25 4 x M40
6	252	217.6	238.5	2 x M20 2 x M25 4 x M20
12	72	160.0	193.0	2 x M20 2 x M32 4 x M32

DESCRIPTION	EAN CODE	AVAILABLE	ORDER NO.
Surface enclosure 1 black/light grey	9004840176575		<b>MM216535</b>
Surface enclosure 1 black/yellow	9004840176582		<b>MM216536</b>
Surface enclosure 2 black/light grey	9004840176599		<b>MM216537</b>
Surface enclosure 3 black/light grey	9004840176605		<b>MM216538</b>
Surface enclosure 4 black/light grey	9004840176612		<b>MM216539</b>
Surface enclosure 6 black/light grey	9004840176629		<b>MM216540</b>
Surface enclosure 12 black/light grey	9004840196528		MM222688





# MAIN SWITCHES, CONTROL SWITCHES, COMMAND AND SIGNALLING DEVICES

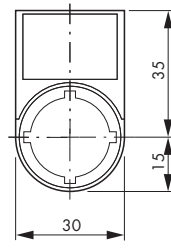
## LABELS FOR SERIES MM



MM216494



MM216465



DIMENSIONS

DESCRIPTION	EAN CODE	AVAILABLE	ORDER NO.
Emergency stop label, dia.=60, 4 languages	9004840226768		<b>MM216483</b>
Emergency stop label 50x50	9004840215328		<b>MM216484</b>
Label holder, empty 30x50mm	9004840176643		<b>MM216392</b>
Label holder for double pushbutton, empty 30x75	9004840176650		<b>MM216394</b>
Emergency stop label, dia.=90, empty	9004840176940		<b>MM216464</b>
Emergency stop label, dia.=90, 4 languages	9004840176957		<b>MM216465</b>
Label, 18x27 mm, alu, plain	9004840176971		<b>MM216480</b>
Label, 18x27 mm, custom	9004840176988		MM216482
Label+holder 30x50 0 I	9004840177008		<b>MM216485</b>
Label+holder 30x50 1 0 II	9004840177022		<b>MM216486</b>
Label+holder 30x50 On	9004840177046		MM216487
Label+holder 30x50 Operation	9004840177053		<b>MM216488</b>
Label+holder 30x50 Alarm	9004840177060		<b>MM216489</b>
Label+holder 30x50 Off On	9004840177077		MM216490
Label+holder, Manual Auto	9004840177084		MM216492
Label+holder, Manual 0 Auto	9004840177091		<b>MM216493</b>
Label+holder 30x50 Stop	9004840177107		<b>MM216494</b>
Label+holder 30x50 Start	9004840177114		<b>MM216495</b>
Label+holder 30x50 ON	9004840177138		<b>MM216496</b>
Label+holder 30x50 OFF ON	9004840177169		<b>MM216499</b>
Label+holder, MAN. 0 AUTO	9004840177183		<b>MM216501</b>
Label+holder 30x50 Off	9004840177039		MM218299
Label+holder 30x50 OFF	9004840177121		MM218300
Emergency stop label 33x50	9004840190168		<b>MM216472</b>
Emergency stop label 33x50	9004840195767		<b>MM216471</b>



## I KNOW WHERE TO FIND IT!

THE SCHRACK TECHNIK WEB SHOP WITH NAVIGATOR  
[WWW.SCHRACK.COM](http://WWW.SCHRACK.COM)

- Finding product information made easy
- Buying products around the clock
- Quick access customer service



# MAIN SWITCHES, CONTROL SWITCHES, COMMAND AND SIGNALLING DEVICES

## OTHER ACCESSORIES FOR SERIES MM



MM216398



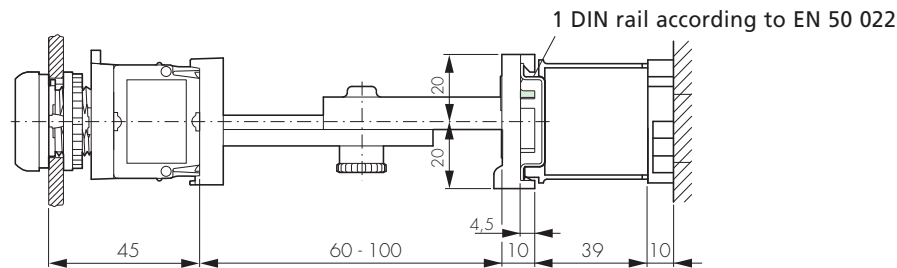
MM216400



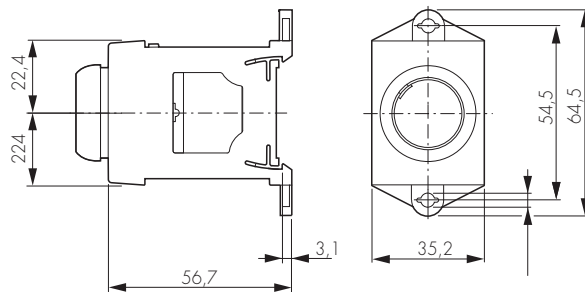
MM231273

## DIMENSIONS

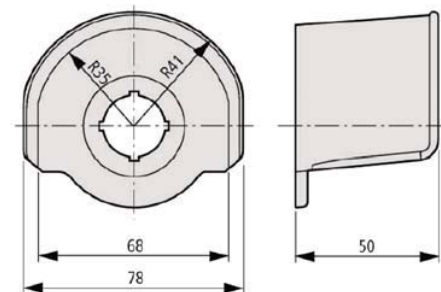
Pushbuttons, illuminated pushbuttons, signal lamps with telescopic clip



DIN rail adapter



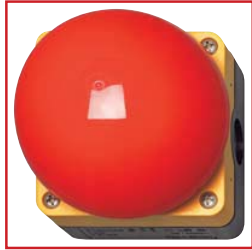
Protective collars for emergency stop



DESCRIPTION	EAN CODE	AVAILABLE	ORDER NO.
Telescopic clip	9004840177473		MM216398
DIN rail adapter	9004840176698		<b>MM216400</b>
Button protective membrane for pushbuttons	9004840176667		<b>MM216395</b>
Button protective membrane for double pushbuttons	9004840176674		<b>MM216396</b>
Sealing cover for emergency stop	9004840176681		<b>MM216397</b>
Protective collar for emergency stop, yellow	9004840276725		<b>MM231273</b>
Protective collar for emergency stop, grey	9004840456288		MM271610
Coding part pull-off	9004840176711		<b>MM216406</b>
Coding part stay-put/spring-return	9004840176728		<b>MM216407</b>
Bridge for centre contact	9004840207934		<b>MM216405</b>
Threaded ring M22x1.5 mm	9004840177466		MM216401
Mounting key	9004840176704		<b>MM216402</b>
Reducer kit from 30 to 22.3 mm drill hole	9004840190151		<b>MM216408</b>
Blind cap, black, round	9004840176636		<b>MM216390</b>
Blind cap, grey	9004840207910		<b>MM216388</b>

# MAIN SWITCHES, CONTROL SWITCHES, COMMAND AND SIGNALLING DEVICES

## ■ SERIES MM – PALM SWITCHES



MM229747/IMM229748



MM229749



MM229746

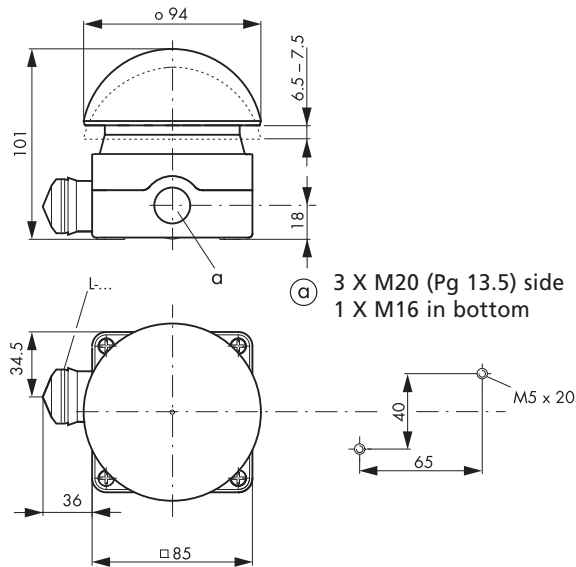
### ■ SCHRACK INFO

- IP 67/ IP 69K
- NC with safety function through positive opening operation meeting IEC 947-5-1
- Large robust impact surface
- Emergency stop provides overload-proof operation in accordance with ISO 13 850/EN 418

### ■ TIPS & TRICKS

The auxiliary contacts are identical to those of the titanium range

### ■ DIMENSIONS



DESCRIPTION	EAN CODE	AVAILABLE	ORDER NO.
Palm switch, black, 1 NO/1 NC, momentary	9004840226324		<a href="#">MM229749</a>
Palm switch, red, 1 NO/1 NC, momentary	9004840226355		<a href="#">MM229746</a>
Emergency stop switch, 1 NC, maintained	9004840226331		<a href="#">MM229747</a>
Emergency stop switch, 1 NO/1 NC, maintained	9004840226348		<a href="#">MM229748</a>



## I KNOW WHERE TO FIND IT!

WITH THE SCHRACK TECHNIK LIVE-PHONE APP

- Access technical product information at any time and from everywhere
- See availability and price immediately
- Order desired products easily

# MAIN SWITCHES, CONTROL SWITCHES, COMMAND AND SIGNALLING DEVICES

## ■ SERIES MM – SIGNAL LAMPS – GENERAL INFORMATION



SIGNAL LAMPS RMQ TITANIUM

### ■ SCHRACK INFO

The signal lamps are ideal, for example, to indicate different operating states of machinery.

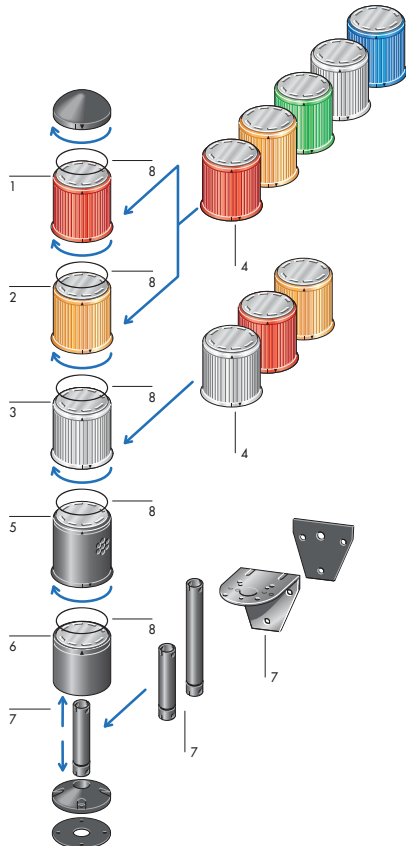
### ■ TIPS & TRICKS

The free programmability of each module allows you set up different alert levels – both visual and audible indicators. Programming simply by jumpers.

## ■ TECHNICAL DATA

- Degree of protection IP 54 (acoustic indicator IP 20)
- Modular design without wire
- Individual modules can be programmed separately
- Easy mounting through bayonet clock
- Up to 5 modules can be controlled
- For 110 - 130 V and 230 V AC or 24 V DC
- Continuous and blinking light, with 5 W incandescent lamp, BA 15d
- Flashing light, with 15 cd light intensity, Flashing frequency approx. 60/min
- Acoustic indicator with 90 dB
- Terminal capacity 6 x 1.5 mm<sup>2</sup>
- Five dome colours: red, yellow, green, blue, white
- Meets the standards and specifications: IEC/EN 60 947, VDE 0660
- Degree of protection: IP54
- Climatic proofing:
  - Damp heat, constant: IEC 60 068-2-3
  - cyclic: IEC 60 068-2-30
- Ambient temperature closed, min./max.: -25/+50 °C
- Installation in any position
- Shock resistance (shock duration 11 ms) in accordance with IEC 60 068-2-27: 15 g
- Terminal capacity
  - solid: 2x1.5; 1x2.5 mm<sup>2</sup>
  - stranded: 2x0.5; 1x1.5 mm<sup>2</sup>
- Current paths
  - Rated surge voltage protection Uimp: 4000 V
  - Rated insulation voltage Ui: 250 V
  - Overvoltage category/pollution degree: III/3

## ■ SERIES MM – SIGNAL LAMPS – SYSTEM OVERVIEW

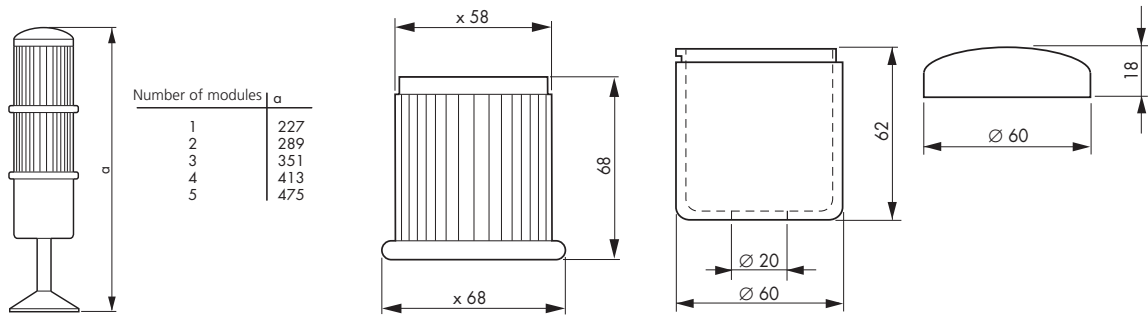


- 1 Permanent light
- 2 Flashing light
- 3 Strobe like
- 4 Domes
- 5 Audible alarms
- 6 Base module
- 7 Optional equipment (mounting)
- 8 Gaskets

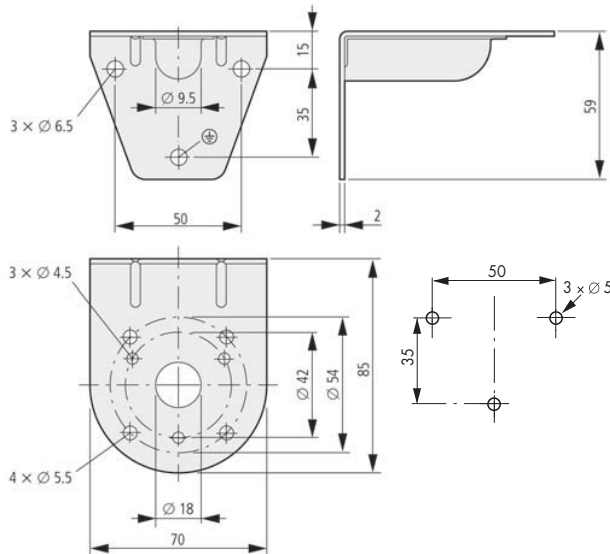
# MAIN SWITCHES, CONTROL SWITCHES, COMMAND AND SIGNALLING DEVICES

## ■ SERIES MM – SIGNAL LAMPS – DIMENSIONS

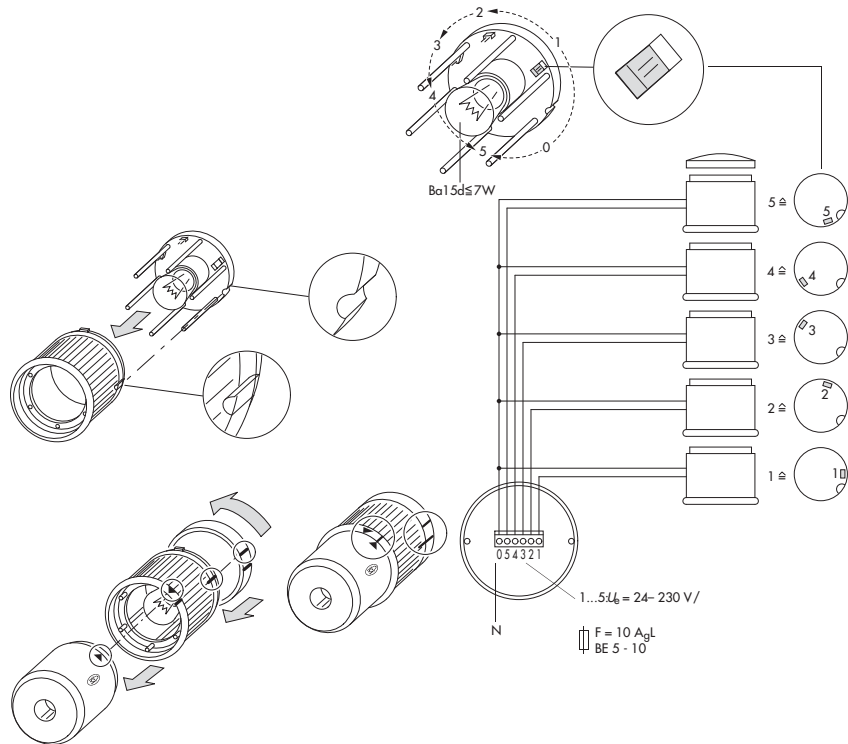
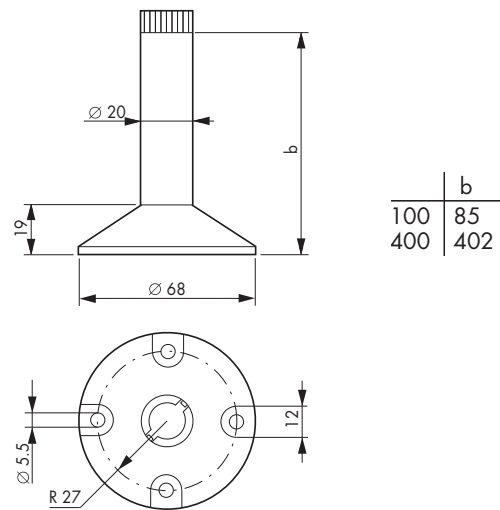
Complete units



Mounting bracket MM205347



Foot MM205345 / MM215275  
with tube



# MAIN SWITCHES, CONTROL SWITCHES, COMMAND AND SIGNALLING DEVICES

## ■ SERIES MM – SIGNAL LAMPS – BASIC MODULE



MM205311

### ■ SCHRACK INFO

Terminal base plus end cover  
The foot must be ordered separately!

DESCRIPTION	EAN CODE	AVAILABLE	ORDER NO.
Signal lamps, basic module with screw terminals	9004840204032		<b>MM205311</b>

## ■ SERIES MM – SIGNAL LAMPS – INDIVIDUAL MODULES



MM205313



MM205314





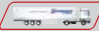
MM205315

DESCRIPTION	EAN CODE	AVAILABLE	ORDER NO.
Signal lamp, continuous light, white	9004840204049		<b>MM205312</b>
Signal lamp, continuous light, red	9004840204056		<b>MM205313</b>
Signal lamp, continuous light, green	9004840204148		<b>MM205314</b>
Signal lamp, continuous light, yellow	9004840204155		<b>MM205315</b>
Signal lamp, continuous light, blue	9004840204162		<b>MM205316</b>
Signal lamp, blinking light, red, 24 V DC	9004840204186		<b>MM205318</b>
Signal lamp, blinking light, red, 230 V AC	9004840204285		<b>MM205328</b>
Signal lamp, blinking light, green, 24 V DC	9004840204193		MM205319
Signal lamp, blinking light, green, 230 V AC	9004840204292		MM205329
Signal lamp, blinking light, yellow, 24 V DC	9004840204209		<b>MM205320</b>
Signal lamp, blinking light, yellow, 230 V AC	9004840204308		<b>MM205330</b>
Signal lamp, blinking light, blue, 230 V AC	9004840204315		MM205331
Signal lamp, flashing light, white, 24 V DC	9004840204322		MM205332
Signal lamp, flashing light, white, 230 V AC	9004840204384		MM205338
Signal lamp, flashing light, red, 24 V DC	9004840204339		<b>MM205333</b>
Signal lamp, flashing light, red, 230 V AC	9004840204391		<b>MM205339</b>
Signal lamp, flashing light, yellow, 24 V DC	9004840204346		MM205334
Signal lamp, flashing light, yellow, 230 V AC	9004840204407		<b>MM205340</b>
Acoustic module with continuous tone, 12-36 V AC/DC	9004840204414		<b>MM205341</b>
Acoustic module with continuous tone, 110-230 V AC/DC	9004840204421		<b>MM205342</b>
Acoustic module with pulse tone, 12-36 V AC/DC	9004840204438		<b>MM205343</b>
Acoustic module with pulse-tone, 110-230 V AC/DC	9004840204445		<b>MM205344</b>


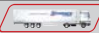




# MAIN SWITCHES, CONTROL SWITCHES, COMMAND AND SIGNALLING DEVICES

## MAIN SWITCHES, CONTROL SWITCHES, COMMAND AND SIGNALLING DEVICES

### ■ SERIES MM – SIGNAL LAMPS – MOUNTING MATERIAL

DESCRIPTION	EAN CODE	AVAILABLE	ORDER NO.
Standfoot with tube 100 mm, plastic	9004840204452		<b>MM205345</b>
Standfoot with tube 400 mm, metal	9004840204674		MM215275
Mounting bracket	9004840204476		<b>MM205347</b>
Sealing kit to IP 65	9004840204698		<b>MM215277</b>

### ■ SERIES MM – SIGNAL LAMPS – ACCESSORIES

DESCRIPTION	EAN CODE	AVAILABLE	ORDER NO.
LED white 18-30 V AC/DC	9004840204704		<b>MM215278</b>
LED red 18-30 V AC/DC	9004840204711		<b>MM215279</b>
LED green 18-30 V AC/DC	9004840204728		<b>MM215280</b>
LED yellow 18-30 V AC/DC	9004840204735		<b>MM215281</b>
LED blue 18-30 V AC/DC	9004840204742		MM215282
Incandescent lamp 24 V	9004840204483		<b>MM205348</b>
Incandescent lamp 110-130 V	9004840204490		MM205349
Incandescent lamp 220-260 V	9004840204506		<b>MM205350</b>



### I KNOW WHERE TO FIND IT!

THE SCHRACK TECHNIK WEB SHOP WITH NAVIGATOR  
[WWW.SCHRACK.COM](http://WWW.SCHRACK.COM)

- Finding product information made easy
- Buying products around the clock
- Quick access customer service